

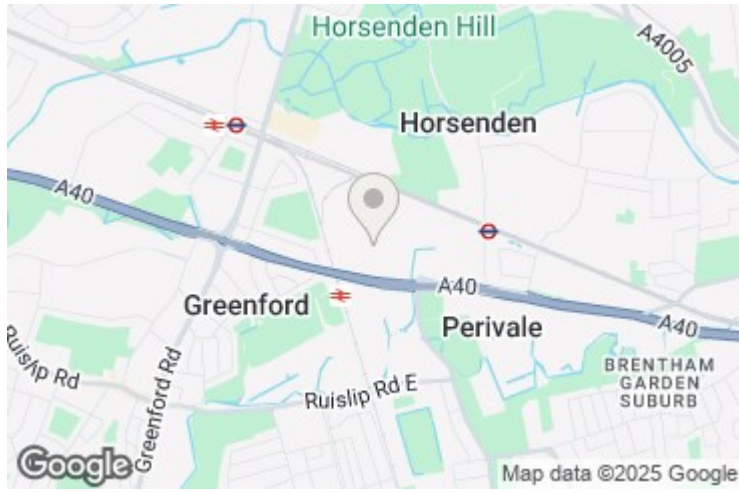


**18 Thames Avenue
Greenford, UB6 8JL**

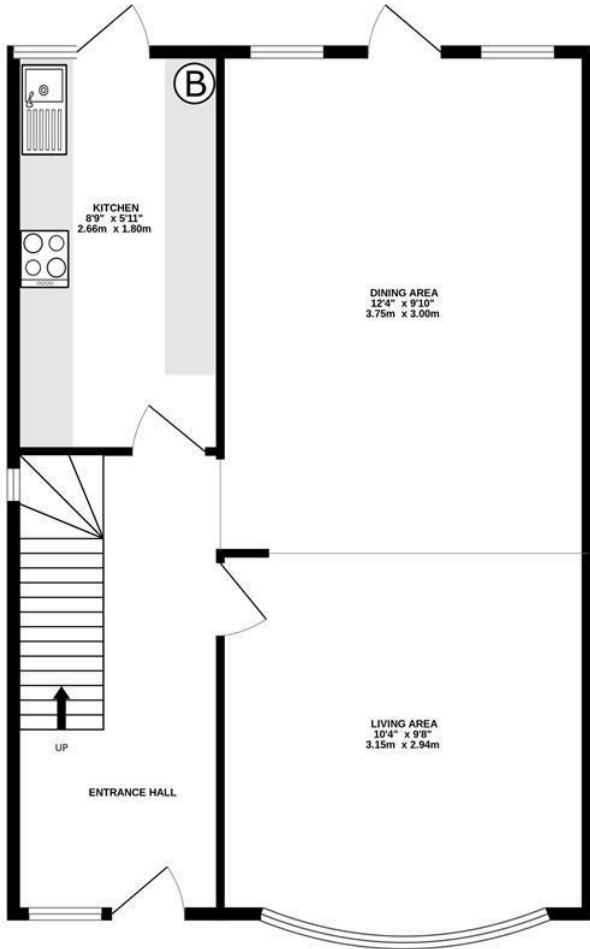
£2,200 PCM

Very well presented 3-bedroom house with a garage and driveway, modern kitchen and bathroom, separate WC, Double Glazed windows, Gas Central Heating, laminate flooring, private rear garden, unfurnished, available from September, EPC "C", Council Tax Band "D"

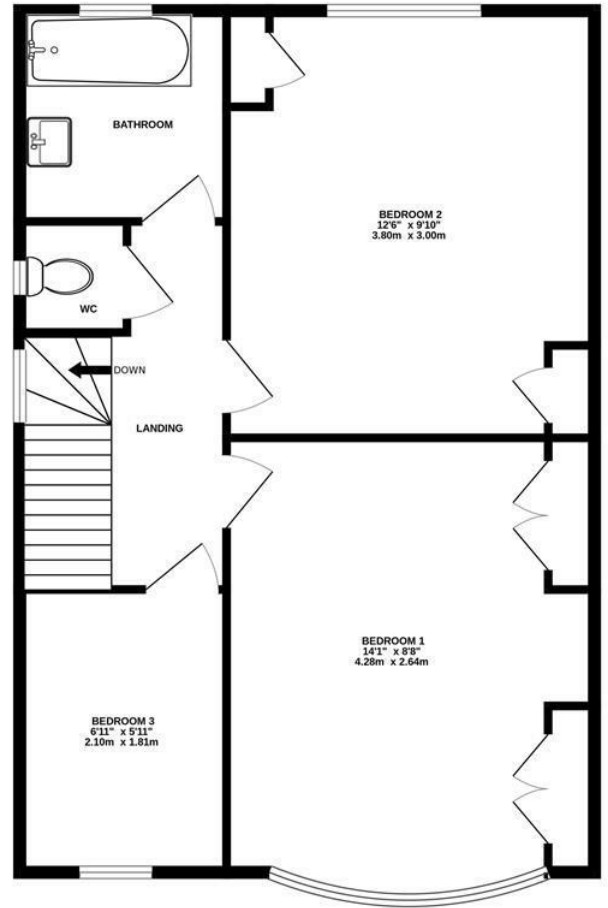
18 Thames Avenue, Greenford, UB6 8JL



GROUND FLOOR
413 sq.ft. (38.4 sq.m.) approx.



1ST FLOOR
413 sq.ft. (38.4 sq.m.) approx.



TOTAL FLOOR AREA : 827 sq.ft. (76.8 sq.m.) approx.

Whilst every attempt has been made to ensure the accuracy of the floorplan contained here, measurements of doors, windows, rooms and any other items are approximate and no responsibility is taken for any error, omission or mis-statement. This plan is for illustrative purposes only and should be used as such by any prospective purchaser. The services, systems and appliances shown have not been tested and no guarantee as to their operability or efficiency can be given.
Made with Metropix ©2025

Energy Efficiency Rating		Current	Potential
Very energy efficient - lower running costs			
(92 plus) A			
(81-91) B			
(69-80) C			
(55-68) D			
(39-54) E			
(21-38) F			
(1-20) G			
Not energy efficient - higher running costs			
England & Wales		71	78
EU Directive 2002/91/EC			

Environmental Impact (CO ₂) Rating		Current	Potential
Very environmentally friendly - lower CO ₂ emissions			
(92 plus) A			
(81-91) B			
(69-80) C			
(55-68) D			
(39-54) E			
(21-38) F			
(1-20) G			
Not environmentally friendly - higher CO ₂ emissions			
England & Wales			
EU Directive 2002/91/EC			